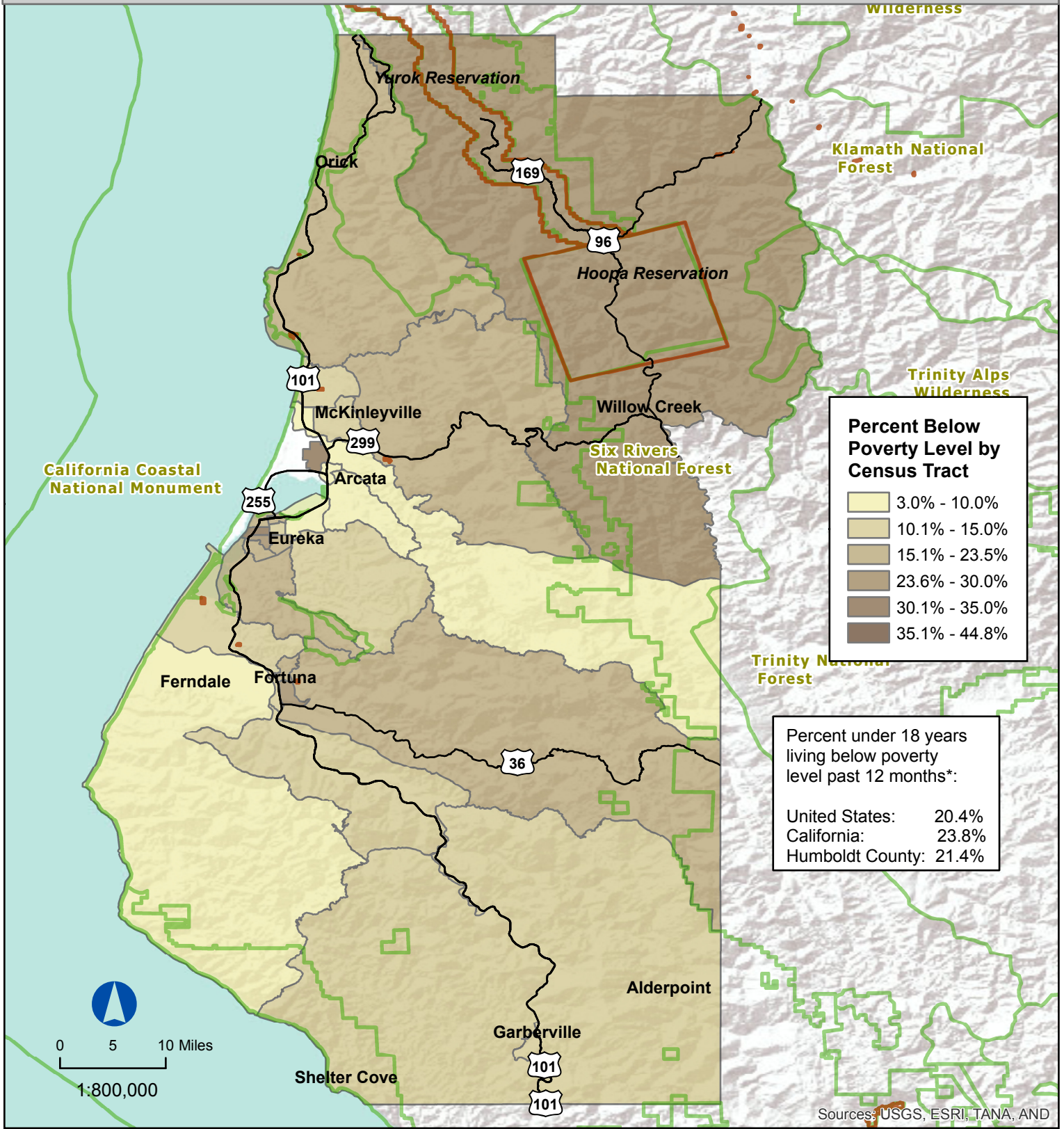


Humboldt County 2010 Percent of Persons Under 18 Living Below Poverty Past 12 Months*



***Past 12 Months" reflects 2009 levels

Map Source: U.S. Census Bureau, 2010 Tigerline Shapefiles, Humboldt County Census Tracts, Retrieved August 31, 2012 from <http://www.census.gov/geo/shapefiles2010/file-download>.
 Data Source: American Community Survey Poverty Status in the past 12 Months(1-year Estimates), Retrieved February 27, 2013 from <http://factfinder2.census.gov/faces/nav/jsf/pages/searchresults.xhtml?refresh=t>
 Rendered by CCRP, May 22, 2014.