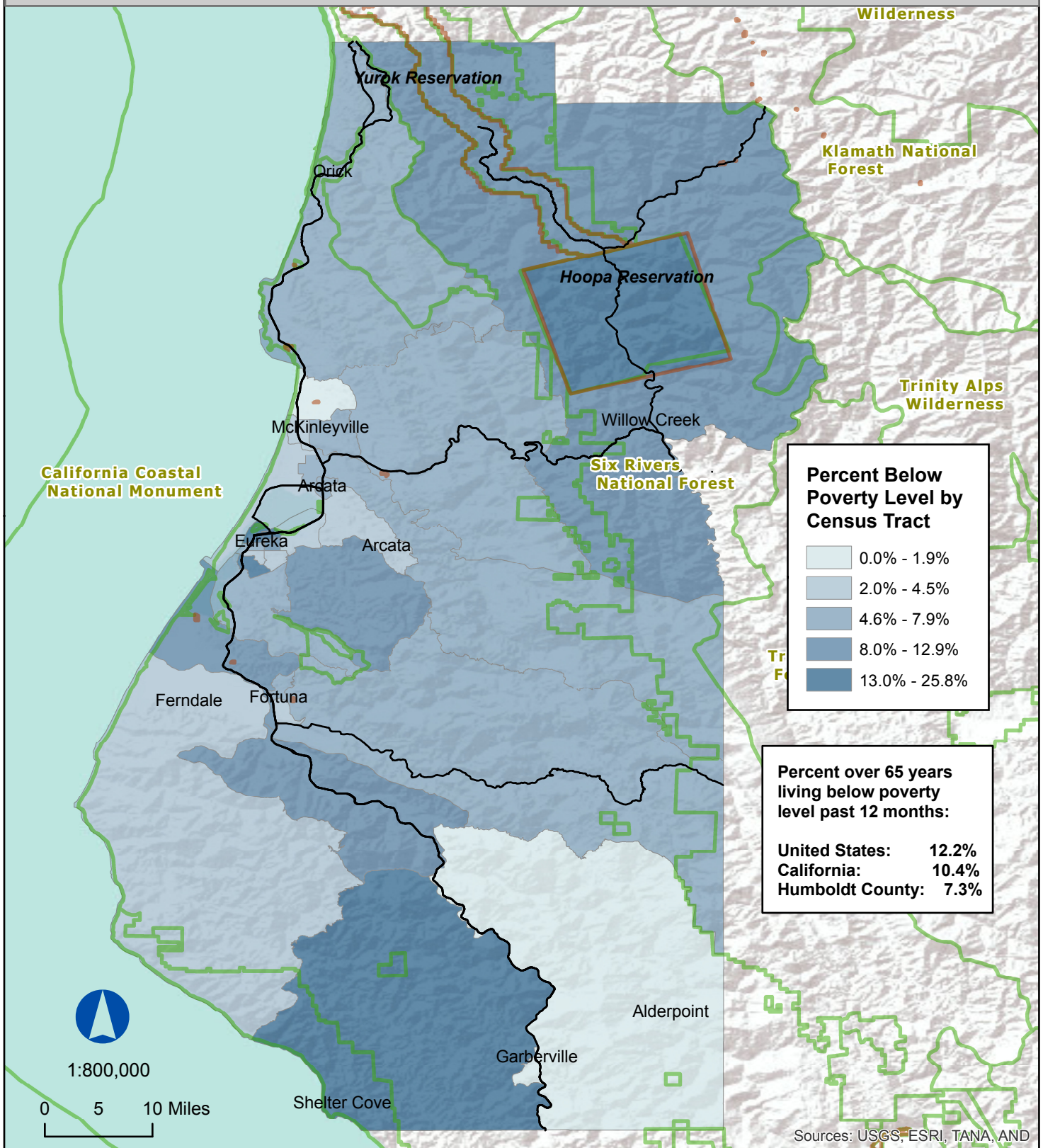


Humboldt County 2010

Percent of Persons 65 and Over Living Below Poverty

Past 12 Months *



**Past 12 Months" reflects 2009 levels

Map Source: U.S. Census Bureau, 2010 Tigerline Shapefiles, Humboldt County Census Tracts, Retrieved August 31, 2012 from <http://www.census.gov/geo/shapefiles2010/file-download>.
Data Source: American Community Survey Poverty Status in the past 12 Months(1-year Estimates), Retrieved February 27, 2013 from <http://factfinder2.census.gov/faces/av/jsf/ages/searchresults.xhtml?refresh=t>
Rendered by CCRP, May 22, 2014.