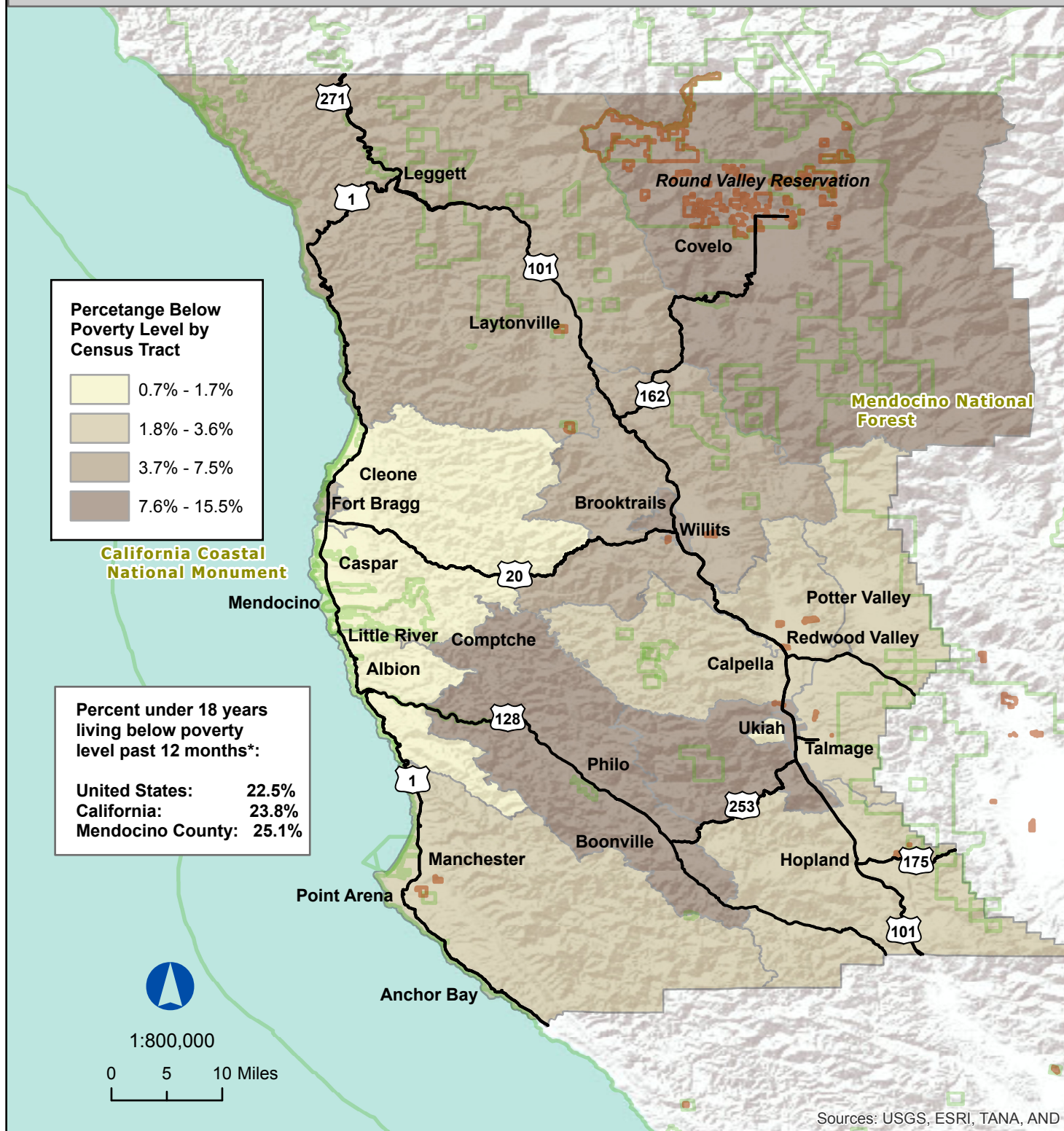


Mendocino County 2010 Percent of Persons Under 18 Living Below Poverty Level Past 12 Months *



* "Past 12 Months" reflects 2009 mean levels

Source: U.S. Census Bureau, 2007-2011 American Community Survey; http://factfinder2.census.gov/faces/tableservices/jsf/pages/productview.xhtml?_afpt=table. Retrieved July 9, 2013.
Map rendered by CCRP, May 28, 2014.