



## Redwood Region RISE

### Community Economic Resilience Fund

### High Road Transition Collaborative (HRTC)

### Governance Structure

## Overview

Redwood Region RISE (Resilient Inclusive Sustainable Economy) is committed to facilitate our High Road Transition Collaborative (HRTC) in leading an inclusive, diverse, transparent, and accountable regional planning process. To center the community voices that don't always participate in or benefit from economic development planning processes, we are establishing a regional-level, formal participatory governance structure designed to shift power to, and lift up, marginalized voices within and beyond the Community Economic Resilience Fund (CERF).

Our governance structure promotes and mandates the active participation of citizens and representatives from eleven community partner categories, four counties, and 27 tribal nations (federally and non-federally recognized), on all decision-making bodies. Through inclusive planning tables, we aim to develop a regional strategy and recommended investments to grow sustainable industries, diversify regional economies, and increase access to high-quality jobs in our Region.

## CERF Initiative: Bird's Eye View

### 1. Economic Development Pilot

The Economic Development Pilot is not directly tied to the CERF Planning and Implementation Phases. The Pilot illustrates projects that are ready for implementation, advance the goals of CERF and may be funded during the Implementation Phase of the program.

### 2. Planning Phase

Each of California's 13 regions receives ~\$5M to create an HRTC to lead an inclusive, diverse, and accountable regional planning process resulting in a regional strategy and recommended investments to grow sustainable industries, diversify regional economies, and increase access to high-quality jobs.

### **3. Catalyst Program**

The proposed Catalyst Program allocates up to \$26.5 million to each of the 13 CERF regions to enable development of ready-to-go projects that can compete for federal, state, and private funding. Following community feedback, the Catalyst Fund might undergo revision.

### **4. Tribal Funding Opportunity**

The CERF Tribal Funding Opportunity allocates up to \$25 million to support economic development in tribal communities through tribal-led planning and implementation projects between January 2024–September 2026.

### **5. Implementation Phase**

The State will release rolling competitive grants between winter 2022–autumn 2026 to fund projects put forward by each Region’s HRTC. Criteria such as demonstrated community support, alignment with climate goals, adherence to labor standards, and access to high-quality jobs with clear employment pathways for underserved and incumbent workers are required elements of project applications.

## **Zooming In: Our Timeline**

### **June–August 2023: Seating The High Road Transition Collaborative**

The High Road Transition Collaborative surfaced all organizations doing vital community and economic development work in our four counties and Tribal Lands. This informed our Endorsement Sheets, which allowed the HRTC to nominate our Region's voting members and put forward recommendations for representatives on the Sector Planning Tables.

The Equity Council started meeting and will audit the nominees selected by the HRTC to ensure fair and balanced representation, specifically from our Priority Communities\*. After confirming and announcing the nominees, new partners will be on-boarded, trainings delivered, Data Collection and Payment Forms and contracts processed, and Partnership Agreement Letters signed. The Convening Team will submit a first draft of the Regional Summary Part 1.

### **September 2023–May 2024: Crafting The Regional Roadmap**

Contracted facilitators guide the hybridly convened Local and Tribal Planning Tables to surface local-level priorities, proposed projects, initiatives, and strategies.

These will be elevated to the relevant, closed-bodied Sector Tables. With these inputs, as well as data and analysis from the drafted Regional Plan Part 1, Sector Tables craft strategies for the Regional Roadmap and elevate projects of regional benefit. All deliberative bodies put forward criteria for evaluating "High Road" compatible initiatives and create processes and rubrics to evaluate proposals.

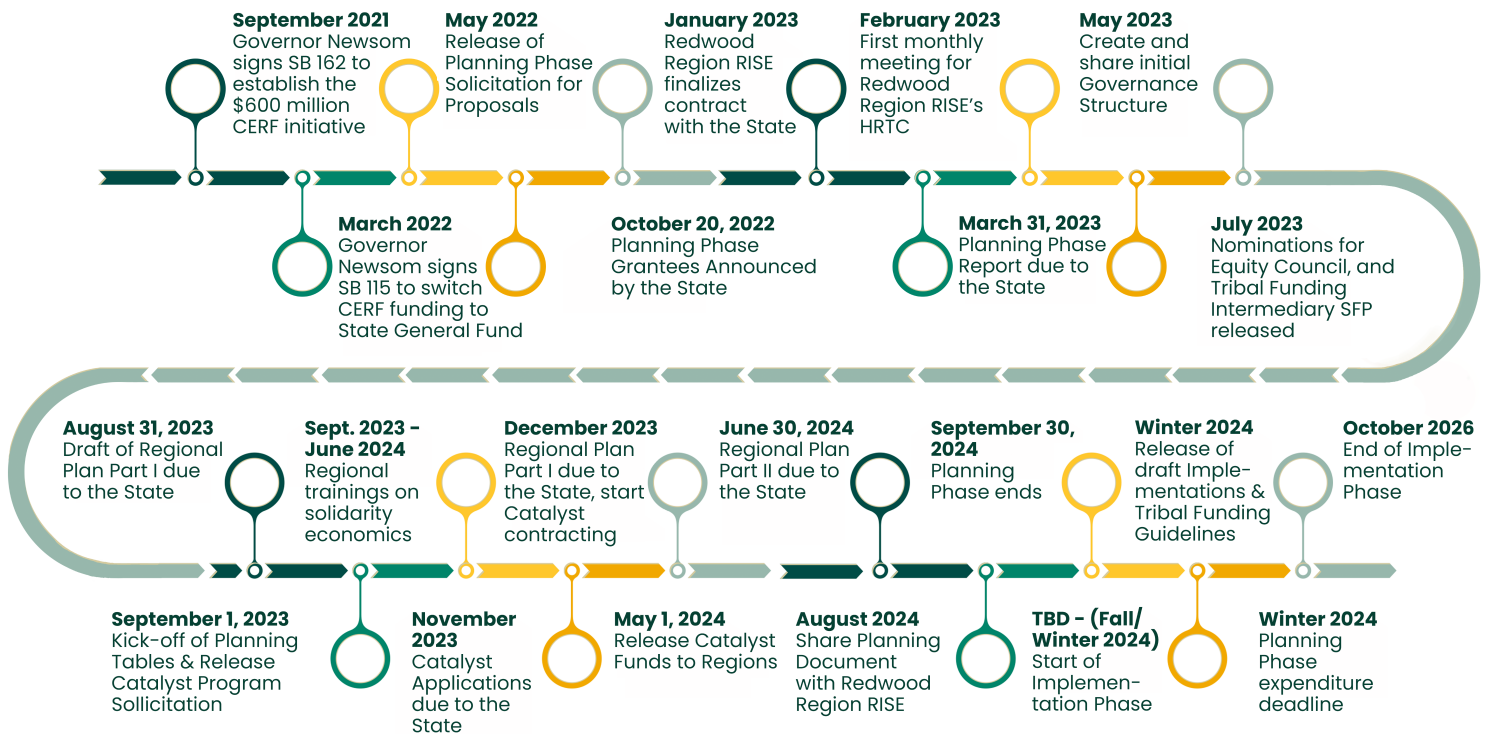
## June 2024: Finalizing The Regional Roadmap

With inputs from the Local and Tribal Planning Tables, Sector Tables collectively put forward a slate of proposed projects and strategies to the voting members. Three to five projects are identified for funding. Redwood Region RISE delivers the Regional Roadmap to the State.

## June–August 2024: Creating Long-Term Governance And Organizing

All bodies engage in appreciative inquiry of High Road Transition Collaborative process and organization, identify governance issues for redress, formalize charter and voting rules, the process for seating members, our Region's performance on equity and inclusion on decision-making bodies, and fairness of outcomes to date.

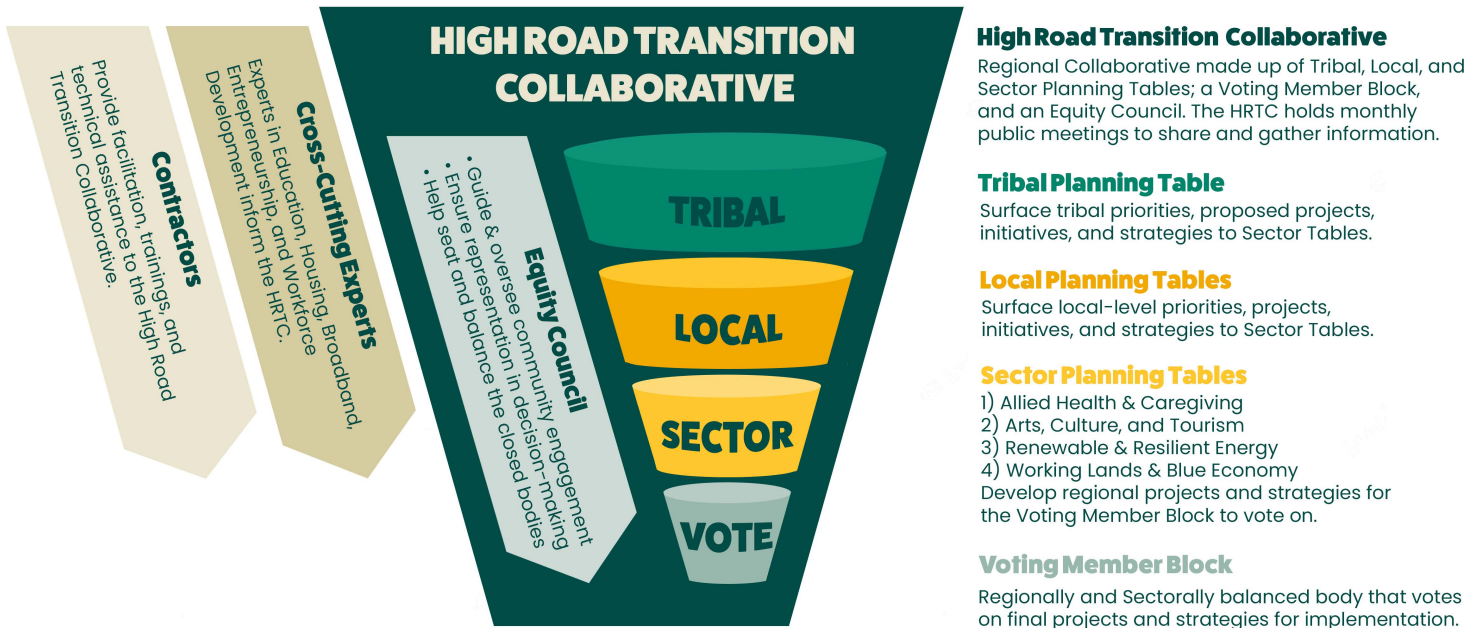
### CERF Timeline \*Please note: subject to change



# Our Governance Structure

Redwood Region RISE's governance structure in the CERF Planning Phase is illustrated in the flow chart below:

## Redwood Region RISE High Road Transition Collaborative (HRTC) Planning Phase Flow Chart



## Descriptions Of Bodies, Roles, And Responsibilities

### 1. High Road Transition Collaborative (HRTC)

"High Road Transition Collaboratives" or "Collaboratives" are broad-based regional groups convened by a skilled and impartial intermediary to plan for economic recovery and a sustainable and equitable economic future. The State requires all HRTCs to:

- Have subregional representation on all decision-making bodies;
- Include Priority Communities\* on all decision-making bodies;
- Have HRTC members sign Partnership Agreement Letters;
- Have balanced representation from all partner groups, from all subregions where they can be identified.

Redwood Region RISE's HRTC aims to advance a shared prosperity where workers and communities in Del Norte, Humboldt, Lake, Mendocino Counties and Tribal Lands share equally in the benefits of a carbon-neutral future.

The HRTC is the community from which the other bodies—the Tribal, Local and Sector Planning Tables; Voting Member Block; and Equity Council—are assembled. The Collaborative may be asked to advise on key issues and strategies.

Any organization or individual who is aligned with the CERF process and goals is welcome to join our High Road Transition Collaborative. Partnership Agreement Letters are required and should be signed on or before September 1st, 2023. Stipends will be available for attending meetings (\$100/meeting).

## **2. Tribal Planning Table**

The Tribal Planning Table will bring together economic development planners and personnel from our Region's federally and non-federally recognized Tribal Lands to explore issues specific to economic development on Indigenous Territory and identify opportunities for cross collaboration and capacity building. The Tribal Planning Table will surface tribal priorities, proposed projects, initiatives, and strategies to the Sector Tables (more information below). Signed Partnership Agreement Letters will be required, and stipends will be available (\$100/meeting).

## **• Local Planning Tables**

The four Local Planning Tables are:

- Del Norte County and Tribal Lands
- Humboldt County and Tribal Lands
- Lake County and Tribal Lands
- Mendocino County and Tribal Lands

The Local Planning Tables aim to surface local-level priorities, proposed projects, initiatives, and strategies to the Sector Planning Tables. Partnership Agreement Letters will be required      stipends will be available (\$100/meeting)

## **4. Sector Planning Tables**

The four Sector Planning Tables are:

- Allied Health & Caregiving
- Arts, Culture, and Tourism
- Renewable & Resilient Energy (Wind, Solar, Microgrids)
- Working Lands & Blue Economy

The four Sector Planning Tables are primarily responsible for surfacing strategies, identifying constraints and problem-solving solutions, and promoting projects for implementation. They also play a role in forging partnerships and identifying leveraging opportunities for their sector. Each group includes members representing the government, workforce development, and labor/trades to help guide those aspects of strategy development.

Sector Planning Tables will put forward projects and strategies to be evaluated and voted on by the Voting Member Block (more information below) to be put forward for implementation. As this will be a more intensive time commitment, signed Partnership Agreement Letters will be required, and stipends will be available.

### **5. Voting Member Block**

Key decisions are made by the approximately 50 voting members that comprise the Voting Member Block. The Voting Member Block is balanced regionally and accounts for all Required Partner Categories\* and voices from Priority Communities.

### **6. Equity Council**

This Equity Council includes up to twenty-four community members representing Priority Communities\*. The Council will guide and oversee Redwood Region RISE's community engagement process; ensure representation in decision-making; and help seat and balance the HRTC's closed bodies. Signed Partnership Agreement Letters will be required, and stipends will be available (\$100/meeting).

### **7. Cross-Cutting Experts**

The Cross-Cutting Experts will inform the High Road Transition Collaborative on important, intersecting topics such as education, housing, broadband, entrepreneurship, and workforce development in our Region.

### **8. Contractors**

Redwood Region RISE's Contractors will provide facilitation, trainings, and technical assistance to support the High Road Transition Collaborative objective to advance economic development plans and strategies to diversify local economies and develop sustainable industries that create high-quality, broadly accessible jobs for all Californians.

## 9. Convening Team

The Convening Team is comprised of Arcata Economic Development Corporation (AEDC), the California Center for Rural Policy (CCRP), and North Coast Opportunities (NCO). The Convening Team coordinates and provides administrative support and technical assistance with data, analysis, and facilitation support. The Team will help facilitate the HRTC's decision-making processes leading up to the CERF Implementation Phase.

## \*Our Priority Communities And Required Partners

### Priority Communities

Redwood Region RISE strives to center the voices of and seeks input and participation from community members representing or advocating for the following Priority Communities:

- Advocates for People of Color (e.g. Black Lives Matter, Asian Americans Advancing Justice, New Hmong Rising Association, etc.)
- Communities of Color
- Immigrants with Documentation (e.g. work visas)
- Individuals that live in extremely remote/rural areas of the Redwood Coast Region
- Individuals who were Formerly Incarcerated
- Individuals with Hearing Impairment
- Individuals with Intellectual Developmental Disabilities
- Individuals with Learning Disabilities
- Individuals with Physical Disabilities
- Individuals with Vision Impairment
- Individuals without Broadband Access
- Individuals without Documentation
- Lesbian, Gay, Bisexual, Transgender, Queer, Asexual, Intersex + (LGBTQAI+)
- Members of religions and ethnic minority communities
- Monolingual Hmong-Speakers
- Monolingual Spanish Speakers
- New Citizens
- Non-federally Recognized Tribal Nations
- Seniors
- Tribal Citizens
- Tribal Governments
- Unions
- Workers
- Youth

## Required Partner Groups

Our eleven Required Partner Groups were established by the State, and are to have an equal voice in decision-making. These include:

- Business/Business Organizations
- Community-Based Organizations
- Economic Development Agencies
- Education/Training Centers
- Environmental Justice
- Federally and non-Federally recognized Tribes
- Government
- Labor
- Philanthropy
- Priority (“disinvested”) Communities
- Workforce Development partners

