



2017 POINT-IN-TIME COUNT

A Snapshot of Homelessness in Tehama County, California

TEHAMA COUNTY CONTINUUM of CARE

Every two years, communities across the nation conduct a count of individuals and families experiencing homelessness on one night in January. The information gained provides the Continuum of Care, the community and community leaders with insights into the needs of the community.

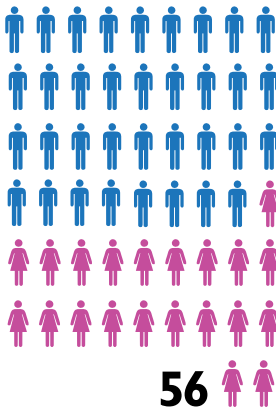
AT LEAST
157

INDIVIDUALS WERE HOMELESS IN TEHAMA COUNTY ON JANUARY 24, 2017.

90 MEN
55 WOMEN
12 CHILDREN

Q: WHERE DO YOU SLEEP?

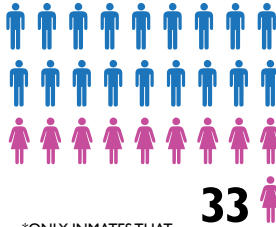
STREETS



EMERGENCY SHELTERS

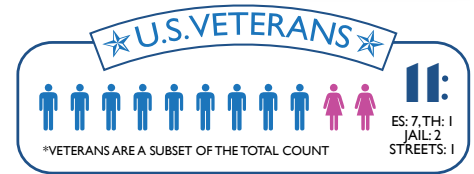


JAIL



*ONLY INMATES THAT WERE HOMELESS UPON ENTRY AND WHO REPORT HAVING NOWHERE TO GO ONCE RELEASED WERE SURVEYED.

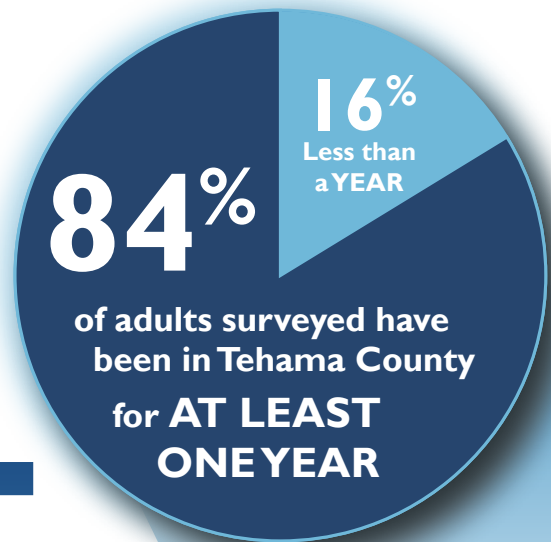
TRANSITIONAL HOUSING



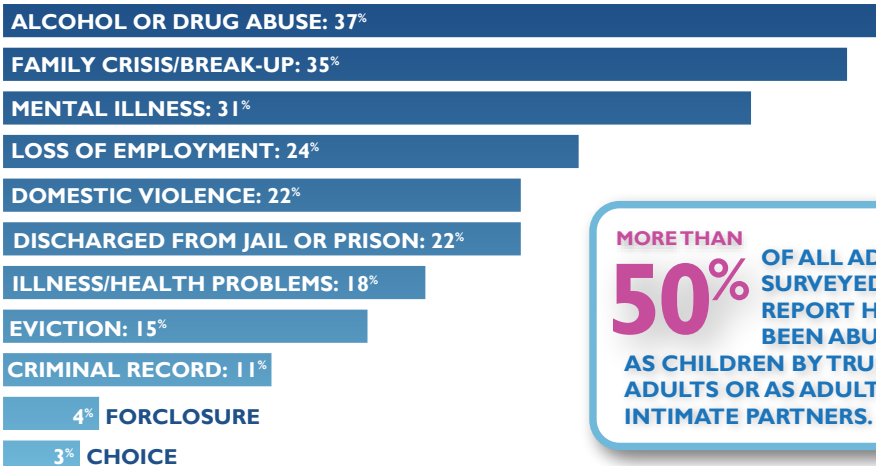
Q: HOW LONG HAVE YOU BEEN HOMELESS?



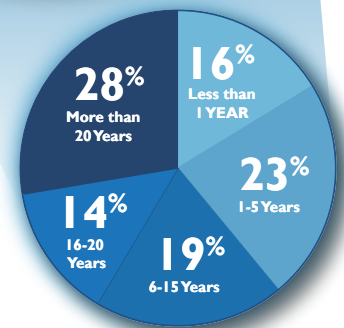
Q: HOW LONG HAVE YOU BEEN IN THIS COUNTY?



Q: WHAT CAUSED YOU TO BECOME HOMELESS?



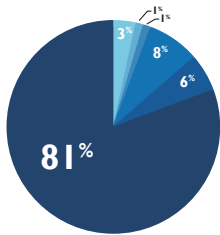
MORE THAN **50%** OF ALL ADULTS SURVEYED REPORT HAVING BEEN ABUSED - AS CHILDREN BY TRUSTED ADULTS OR AS ADULTS BY INTIMATE PARTNERS.



DEMOGRAPHICS

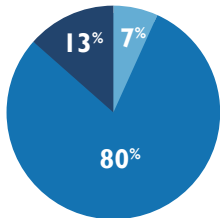
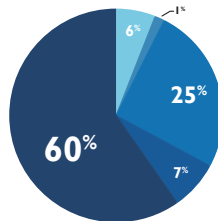
UNSHELTERED
STREET / OUTDOORS /
TEHAMA COUNTY JAIL

SHELTERED
EMERGENCY SHELTER
TRANSITIONAL HOUSING



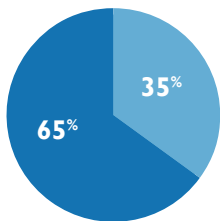
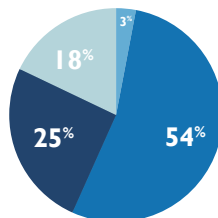
Race/Ethnicity

- American Indian / Alaskan Native
- Asian
- Black / African American
- Hispanic / Latino
- Multiple Races
- White / Caucasian



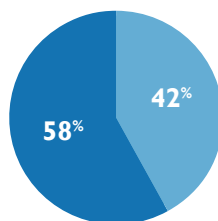
Age Group

- Under 18 years of age
- 18 - 24 years of age
- 25 - 54 years of age
- 55 and older



Gender

- Male
- Female



INCOME & BENEFITS

ANNUAL INCOME (ADULTS)

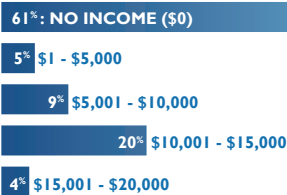
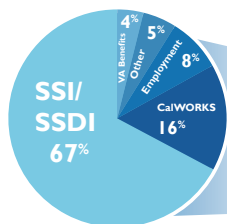
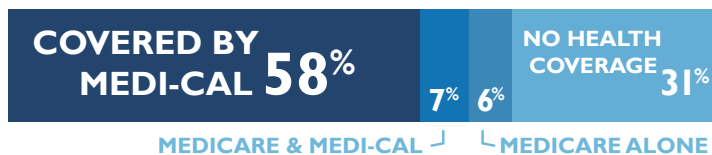


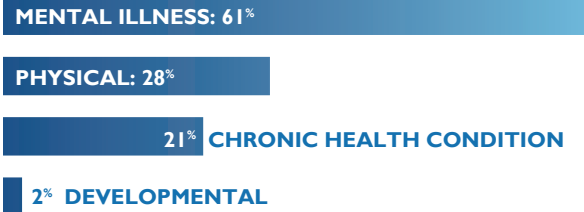
CHART INCLUDES ONLY ADULTS WITH INCOME.

HEALTH INSURANCE

59% OF ALL HOUSEHOLDS SURVEYED RECEIVE CALFRESH BENEFITS



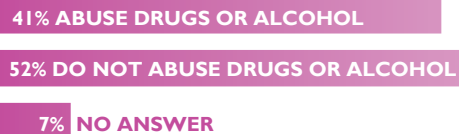
DISABILITIES



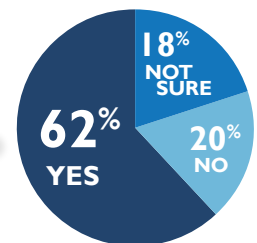
75% OF ADULTS SURVEYED REPORT HAVING AT LEAST ONE DISABLING CONDITION, AND 67% OF THOSE ADULTS REPORT TWO OR MORE TYPES OF DISABILITY.

51% OF ADULTS REPORTING A MENTAL ILLNESS ALSO REPORT RECEIVING MENTAL HEALTH TREATMENT.

SUBSTANCE ABUSE



OF THE ADULTS THAT REPORT ABUSING DRUGS OR ALCOHOL, MOST SAID THEY WOULD BE INTERESTED IN TREATMENT IF IT WAS AVAILABLE TO THEM.



TCCoC

TO FIND OUT MORE, ABOUT EFFORTS TO END HOMELESSNESS IN TEHAMA COUNTY, AND HOW YOU CAN HELP, VISIT US AT:

www.tehamacoc.org

All data contained herein are based on surveys administered to individuals and families experiencing homelessness in Tehama County on January 24, 2017. Original surveys are on file with the Tehama County Continuum of Care. Inquiries regarding this documentation can be submitted through the "Submit a Request" tool available at www.tehamacoc.org.