



Selected Findings from the Rural Health Information Survey

Jessica Van Arsdale, MD, MPH
Director, Health Research

June 11, 2009

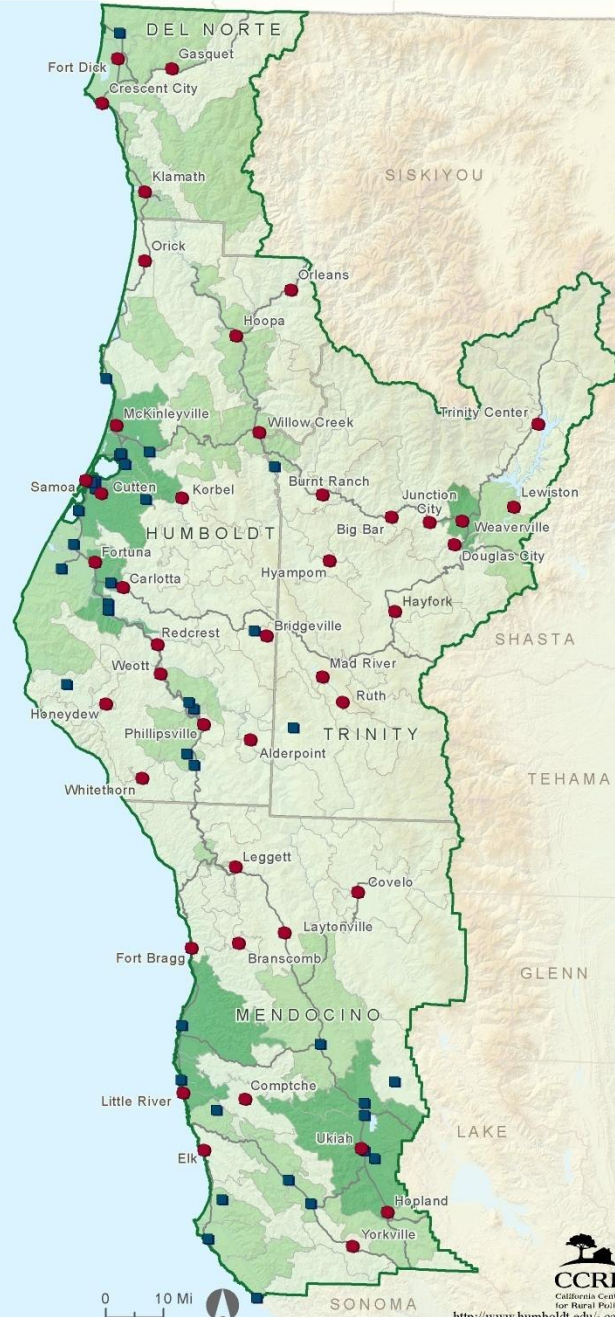
The Rural Health Information Survey (RHIS)

Purpose:

- To identify issues impacting health & access to health care in Del Norte, Humboldt, Trinity & Mendocino Counties.
- To provide Information for planning & policy development

- Conducted in Summer/ Fall 2006 by CCRP
- 4 page written survey
- Quantitative and Qualitative Questions

CCRP Rural Health Information Survey: Socio-Spatial Sampling Scheme by Zip Code Tabulation Area (ZCTA)



Sampled U.S. Post Offices & ZCTA Population Density
(People per sq. mile by ZCTA)

- Sampled Post Offices (Labeled)
- Post Offices

Less than 11
11- 50
Greater than 50

Data Sources: U.S. Postal Service, U.S. Census Bureau (2000)
GIS and Cartography: R. Degagne, J. Pollom, A. Braden (2007)

Response Rates & Sample Sizes by County

County	Rural Health Information Survey (RHIS)		California Health Interview Survey (CHIS)
	Response Rate	Sample Size	2007 Sample Size
Del Norte	12.1%	421	82*
Humboldt	12.3%	880	622
Trinity	14.9%	940	49*
Mendocino	11.2%	705	595
More than 1 of the above		4	
Total	12.7%	2950	1322

*CHIS combines the counties of Del Norte, Trinity, Siskiyou, Lassen, Modoc, Plumas and Sierra

Race/Ethnicity of Respondents

Race/Ethnicity	RHIS Frequency	RHIS % of Sample	U.S. Census, 2000 % of total population Redwood Coast Region
White	2459	84.2	82.9*
Native American	148	5.1	5.4*
Hispanic/Latino	34	1.2	10.6
Black/African American	7	0.2	1.1*
Asian	13	0.4	1.5*
Multiracial	173	5.9	4.2
Other	87	3.0	4.8
Total	2921	100	

Federal Poverty Level of Respondents

Federal Poverty Level	RHIS Frequency	RHIS % of Sample	U.S. Census, 2000 % of total population Redwood Coast Region
≤99%	416	16.2	18.3
100%-199%	645	25.2	NA
200%-299%	491	19.2	NA
≥300%	1009	39.4	NA
Total	2561	100.0	NA

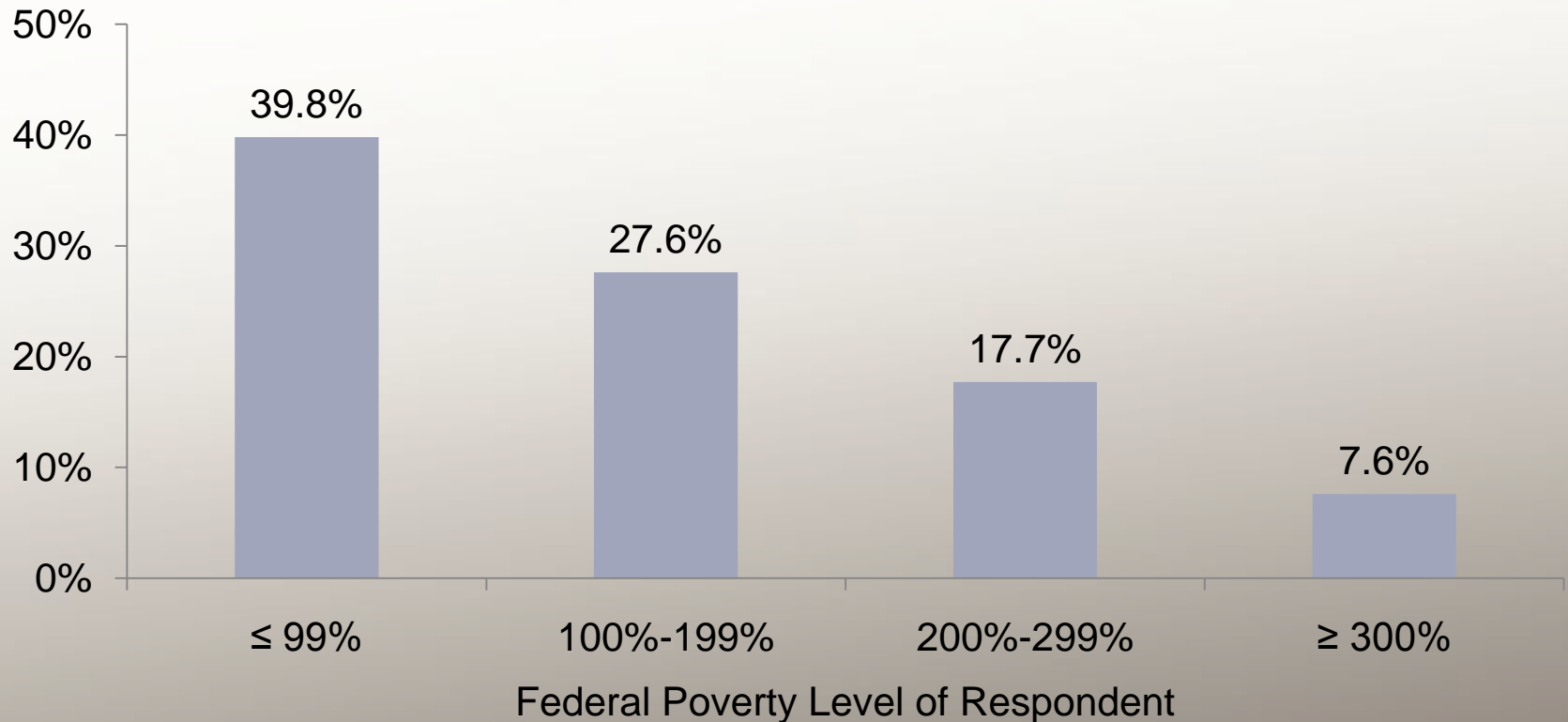
Poverty Thresholds obtained from U.S. Census Bureau, "Poverty Thresholds 2006"

<http://www.census.gov/hhes/www/poverty/threshld/thresh06.html>

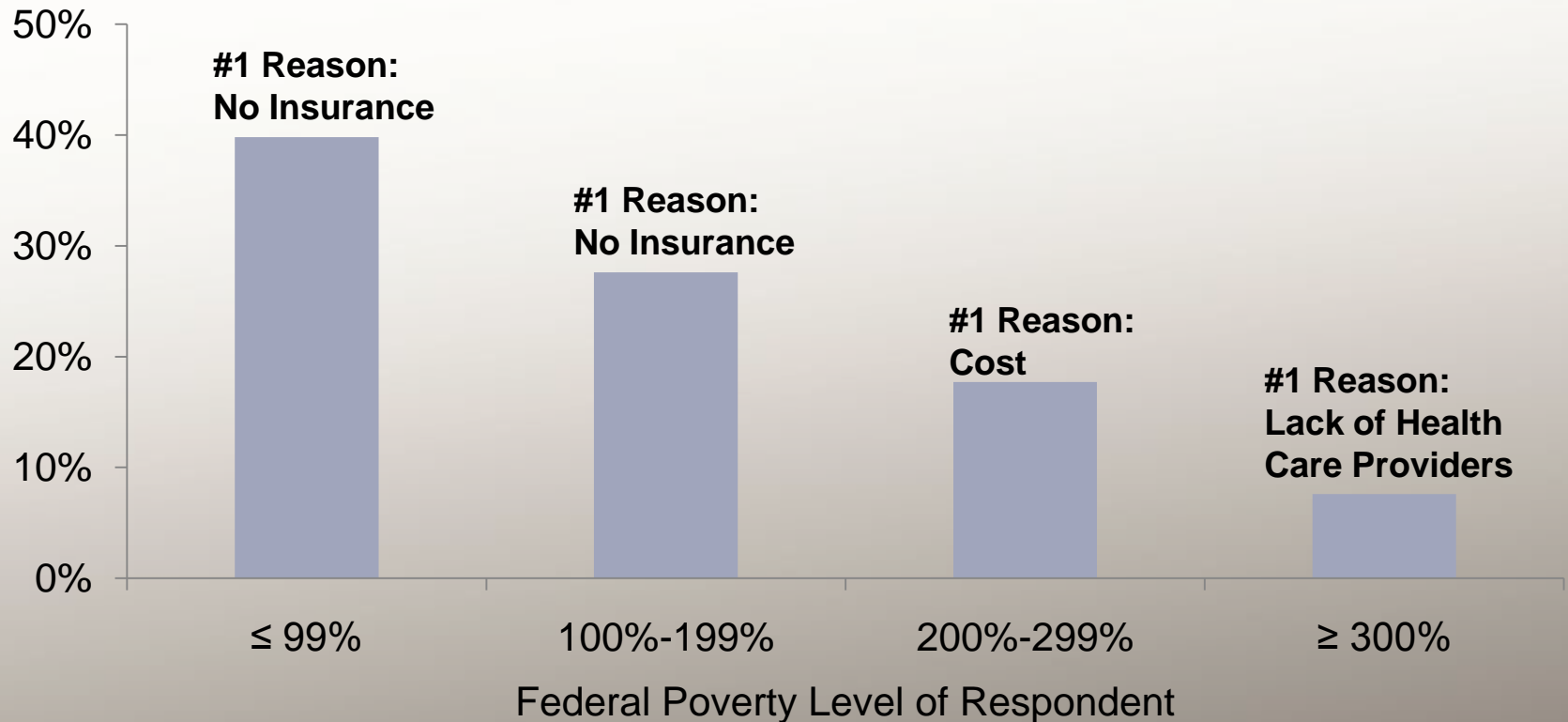
Access to Health Care

*Within the past 12 months, were you able to get the healthcare (including mental healthcare) you needed?
If no, please explain why.*

Unable to Get Needed Health Care by Federal Poverty Level (*n* = 2,205)



Unable to Get Needed Health Care by Federal Poverty Level (*n* = 2,205)



Within the past 12 months, were you able to get the healthcare (including mental healthcare) you needed?

If no, please explain why.

“No doctors available who take Medi-Cal.” Del Norte County Resident, ≤99% FPL

“Cannot afford the high cost- make borderline amount so not qualified for Medi-Cal without lien on my house.” Trinity County Resident, ≤99% FPL

“Insurance is \$5,000 deductible, so I basically have it for emergency, critical issues.” Mendocino County Resident, 100-199% FPL

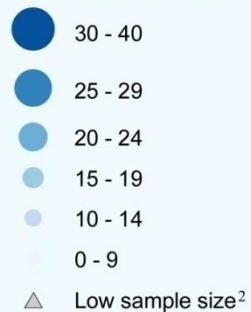
“Refused annual mammogram because local hospital no longer accepts my insurance.” Humboldt County Resident, ≥300%FPL

CCRP Rural Health Information Survey: Percent of Respondents Without Adequate Health Care Access¹, 2006



Study Methods: The Rural Health Information Survey (RHIS) was conducted by the California Center for Rural Policy in the fall of 2006. A total of 23,606 surveys were mailed to a random sample of post office box holders in the four counties of Del Norte, Humboldt, Trinity and Mendocino. The total number of returned surveys was 3,003 for an overall response rate of 12.7%.

Percent of Respondents Without Adequate Health Care Access, 2006



Public Lands

■ National Forests, National & State Parks

¹ Data derived from RHIS survey question (4): Within the past 12 mo. were you able to get the health care (incl. mental health care) you needed? Percentages are shown for survey respondents of each sampled post office.

² Post offices with less than 20 survey responses were not included in analysis due to statistical instability.

³ Facilities shown are those classified as either 'General Acute Care Hospital' or 'Free or Community Clinics' in OSHPD's database.



Health Insurance and Use of the Emergency Department

What types of health insurance do you have?

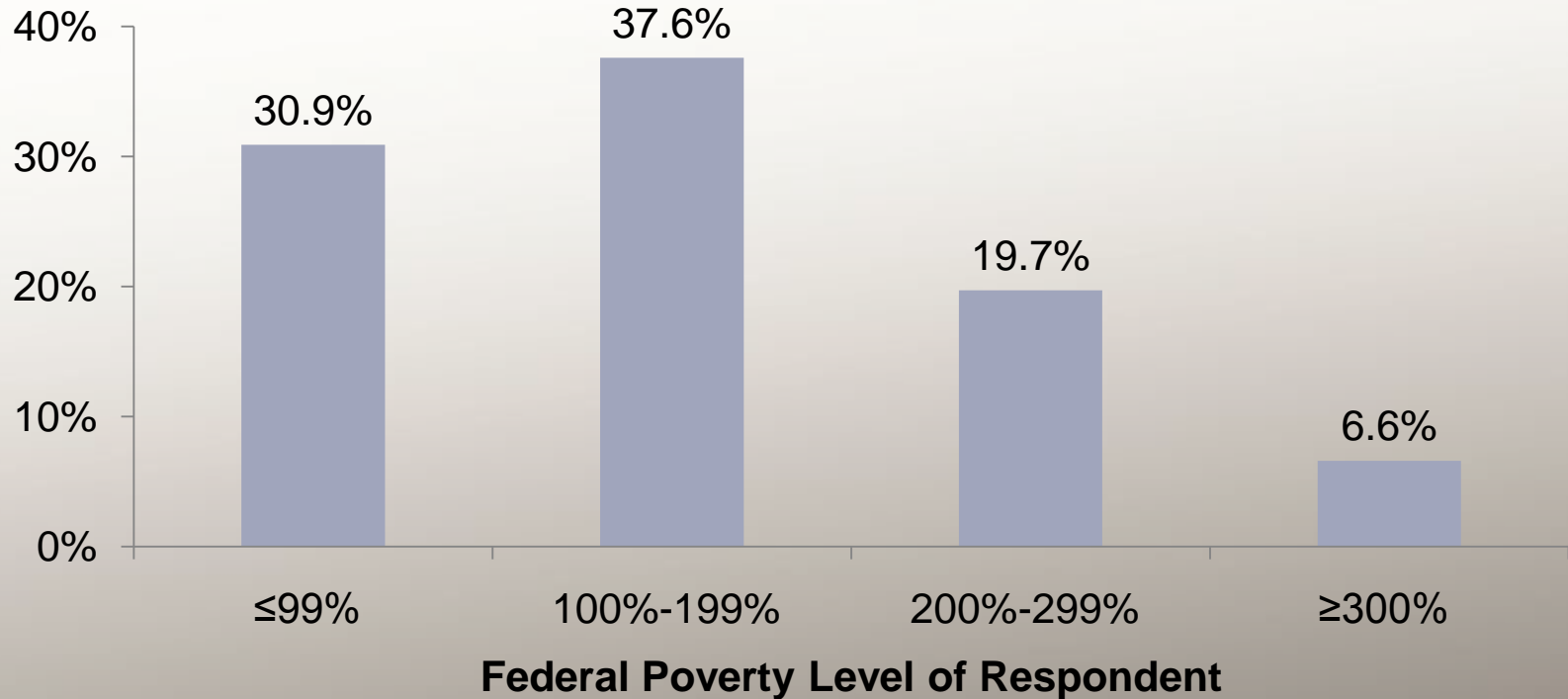
During the past 12 months did you visit a hospital emergency room for your own health?

No Health Insurance by County (age 18-64)

County	RHIS, 2006 No Insurance % (95% CI)	CHIS, 2007 No Insurance % (95% CI)
Del Norte	15.0 (11-19)	22.8 (14.2-31.3)*
Humboldt	25.3 (22.1-28.6)	15.3 (9.0-21.7)
Trinity	17.1 (14.2-20.0)	22.8 (14.2-31.3)*
Mendocino	23.0 (19.5-26.5)	19.4 (10.2-28.6)
Total	21.0 (19.3-22.7)	19.2 (14.4-24.0)

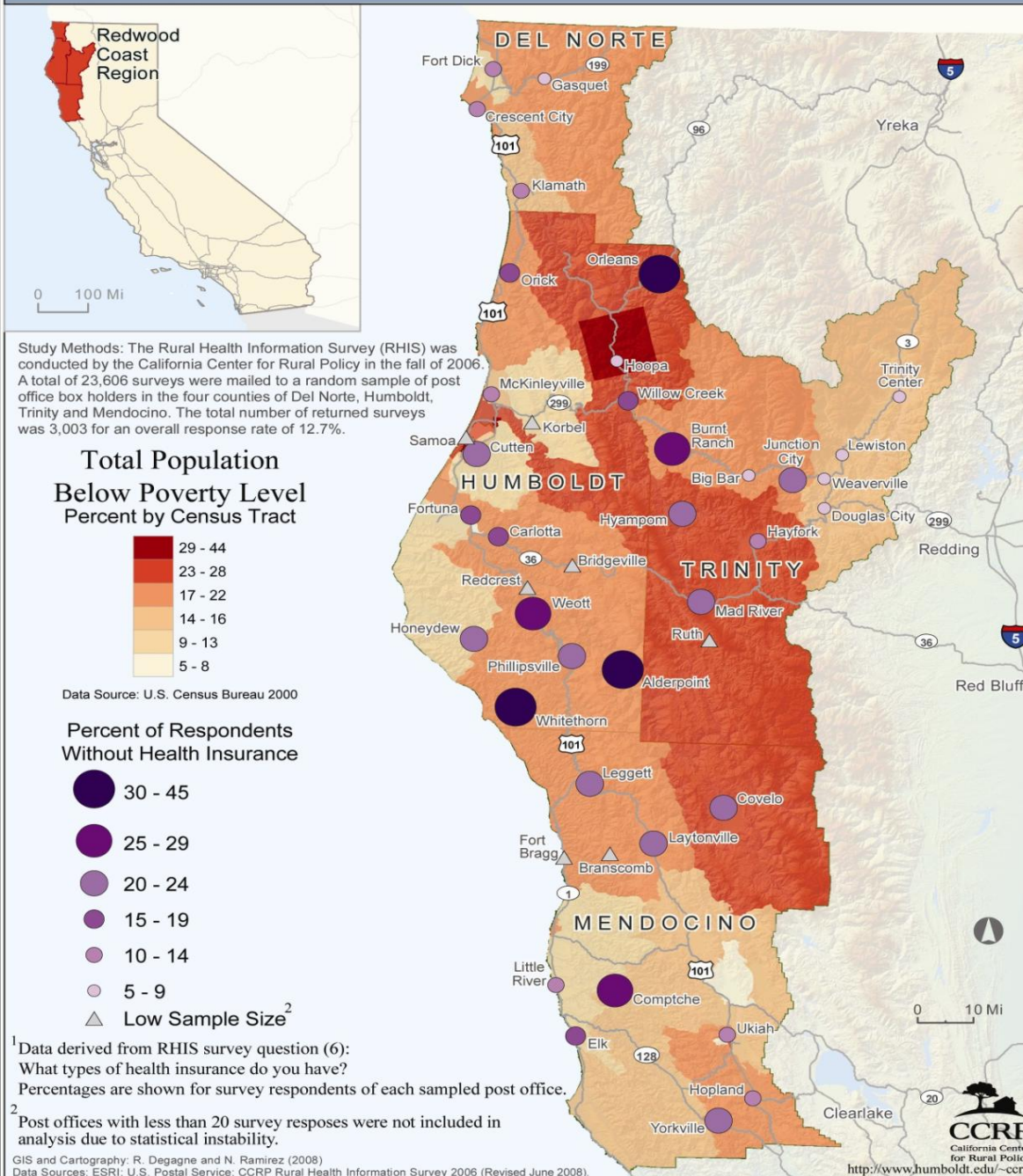
*CHIS combines the counties of Del Norte, Trinity, Siskiyou, Lassen, Modoc, Plumas and Sierra

No Health Insurance by Poverty Level (age 18-64)(*n* = 1,951)

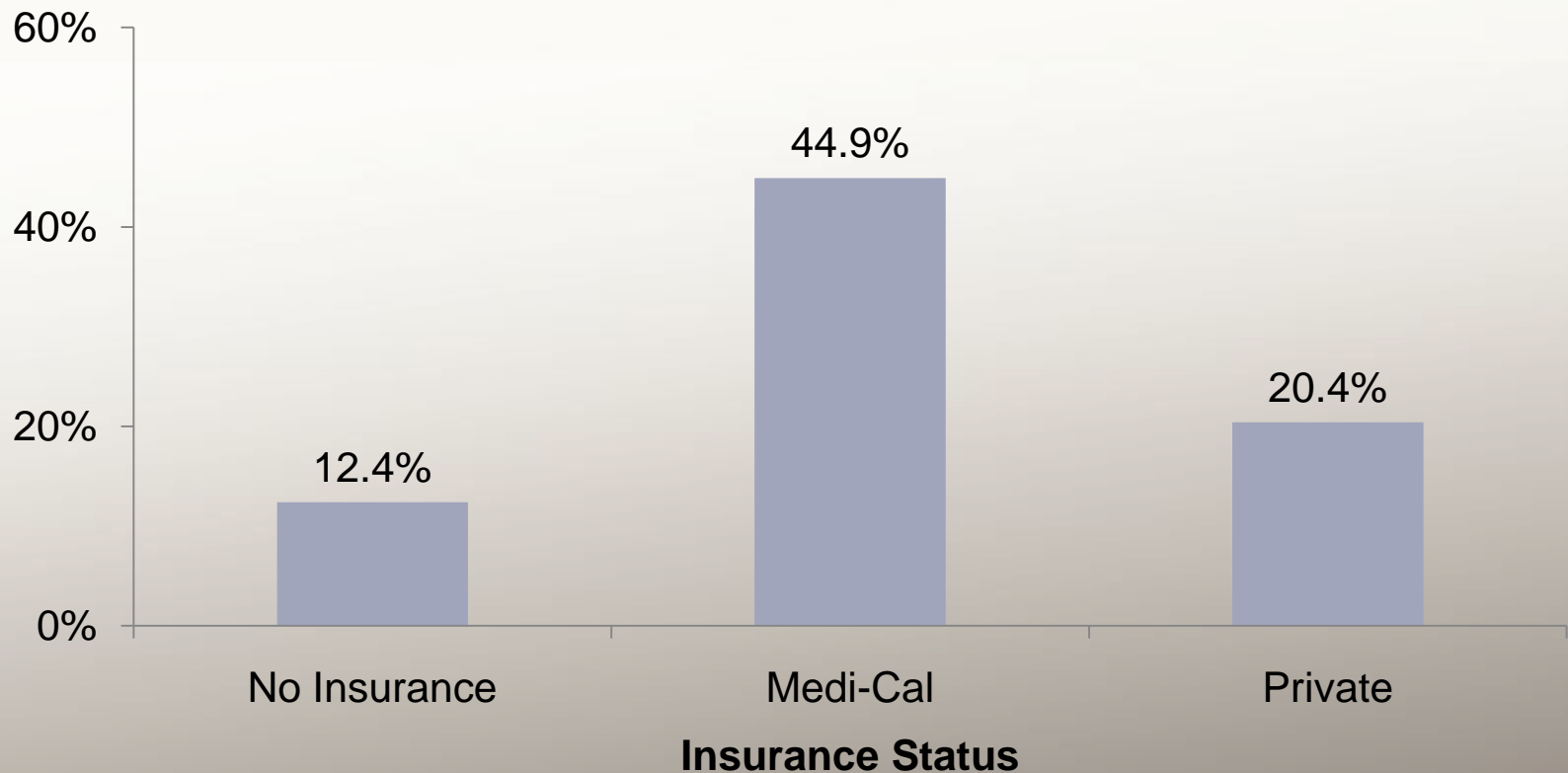


CCRP Rural Health Information Survey:

Percent of Respondents Without Health Insurance¹, 2006



Visited the ER in the Past Year for Health Care by Insurance Status ($n = 2,427$)



Routine Check-up and Screening for Cancer

How long has it been since you last visited a doctor or healthcare provider for a routine check-up?

To the best of your knowledge when did you have the following?

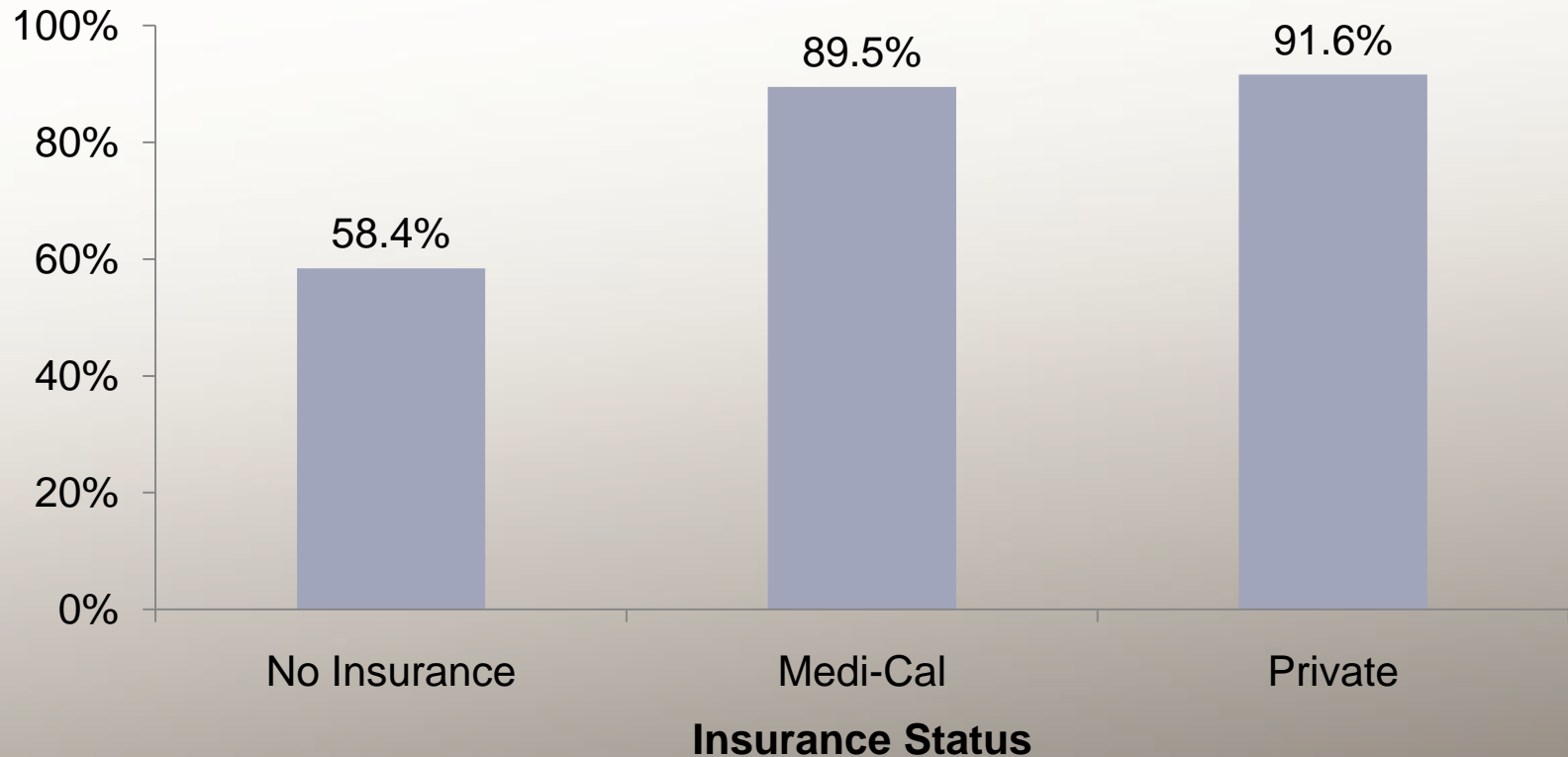
Mammogram (women only)

Pap Smear (women only)

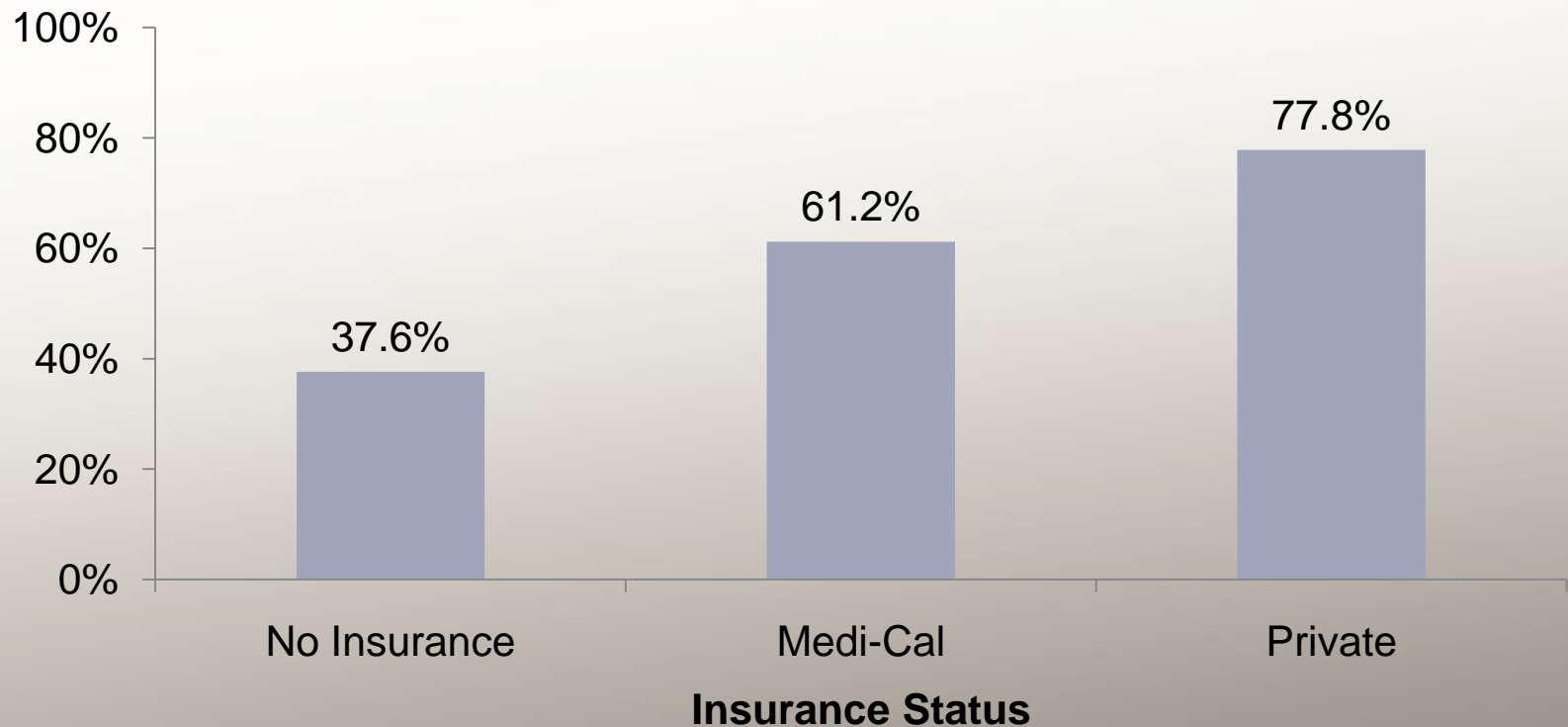
Colonoscopy or Sigmoidoscopy

Fecal Blood Test

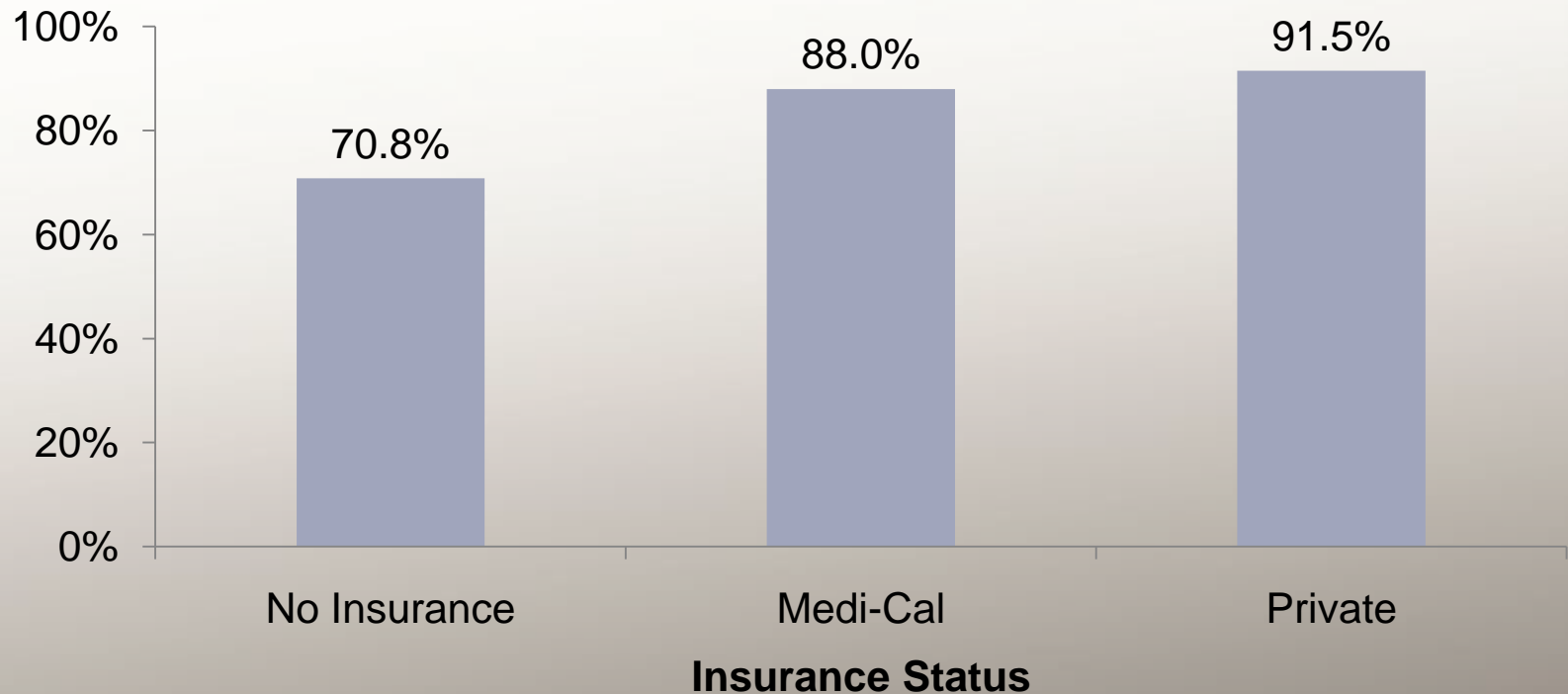
Routine Check-up in Past 4 years by Insurance Status (*n* = 2,189)



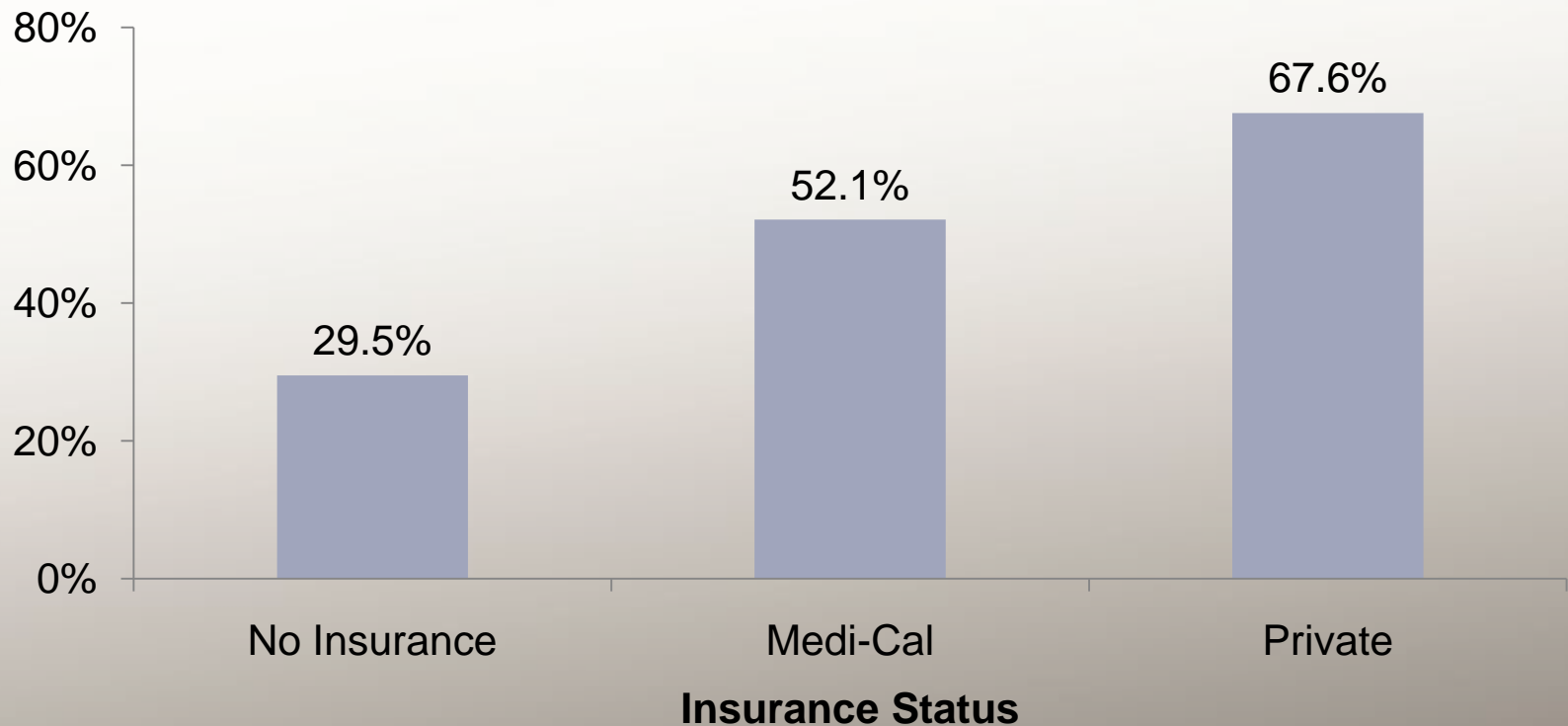
Mammogram in Past 2 years by Insurance Status (women age 40-64) ($n = 999$)



Pap Test in Past 5 Years by Insurance Status (women age 18-64) ($n = 1,263$)



Recommended Colorectal Cancer Screening* by Insurance Status (age 50-64) (*n* = 1,091)

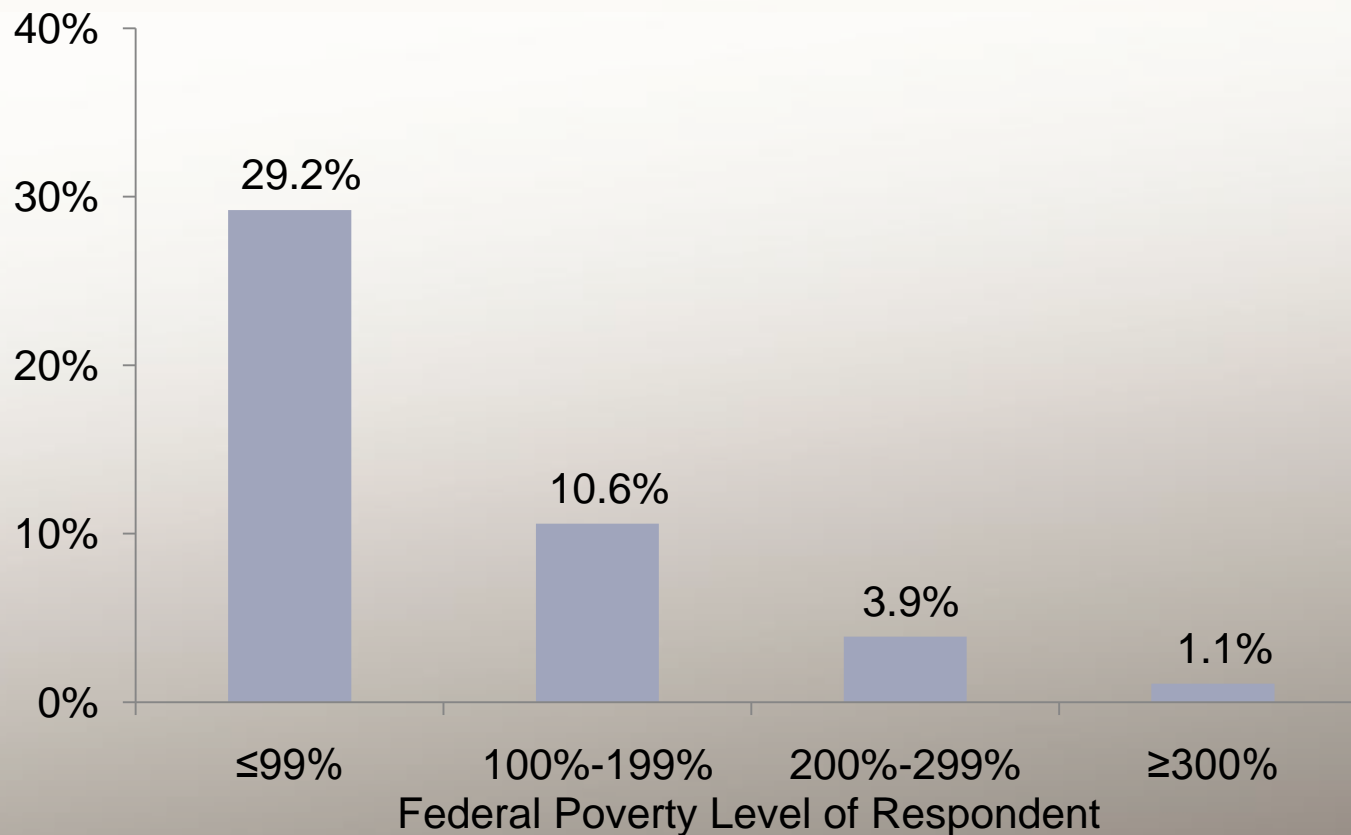


*Colonoscopy/Sigmoidoscopy in past 10 years and/or Fecal Occult Blood Test in past year

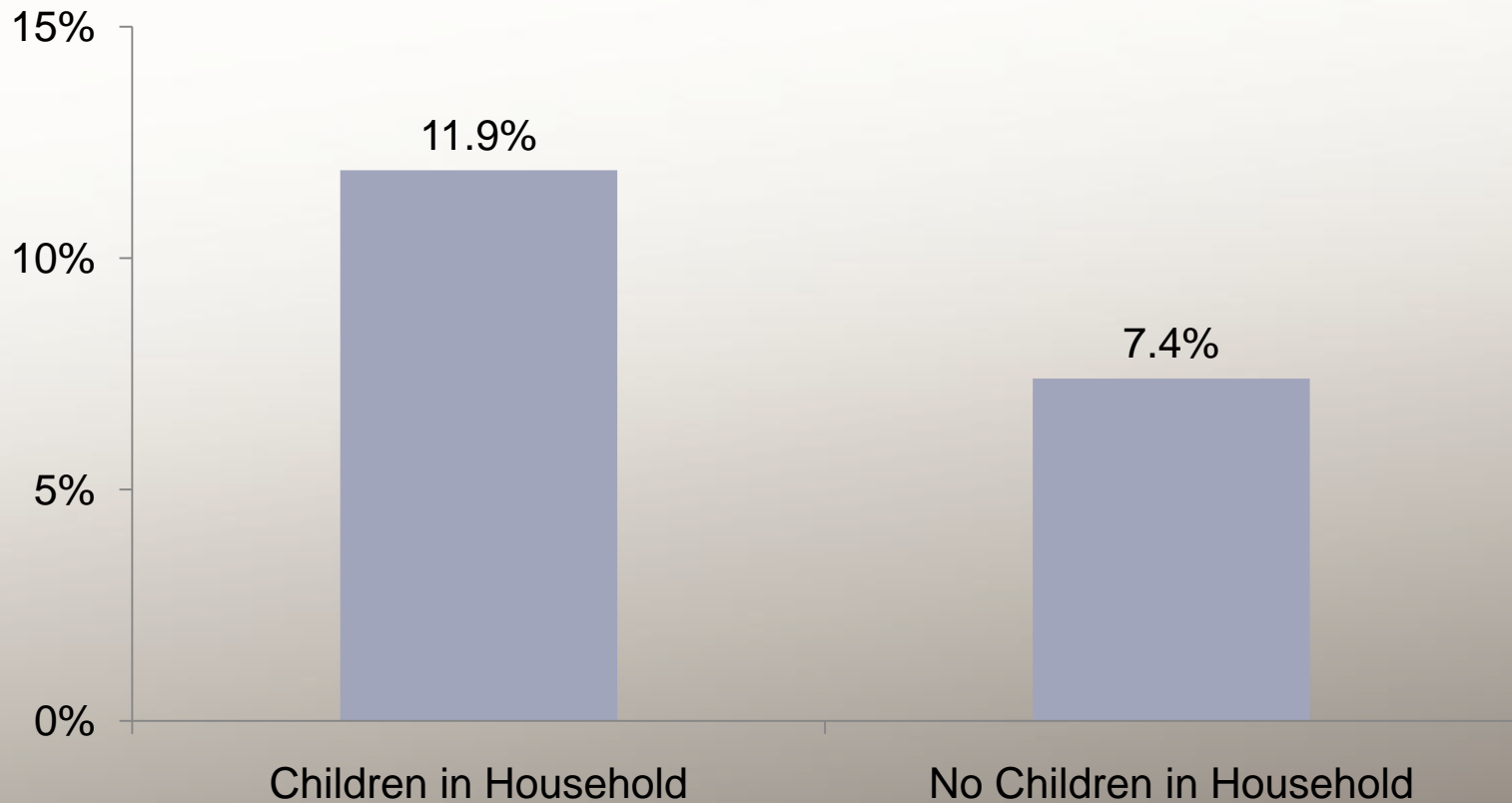
Food Security

“In the last 12 months were you or people living in your household ever hungry because you couldn’t afford enough food?”

Respondents with Very Low Food Security (*n* = 2,537)



Very Low Food Security by Households with Children Under 18 ($n = 2,902$)



Estimate of very low food security in households with children: Nation 4.3%
(2006 Current Population Survey Food Security Supplement)

CCRP Rural Health Information Survey: Percent of Respondents With Very Low Food Security¹, 2006

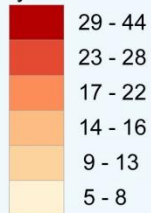


Study Methods: The Rural Health Information Survey (RHIS) was conducted by the California Center for Rural Policy in the fall of 2006. A total of 23,606 surveys were mailed to a random sample of post office box holders in the four counties of Del Norte, Humboldt, Trinity and Mendocino. The total number of returned surveys was 3,003 for an overall response rate of 12.7%.

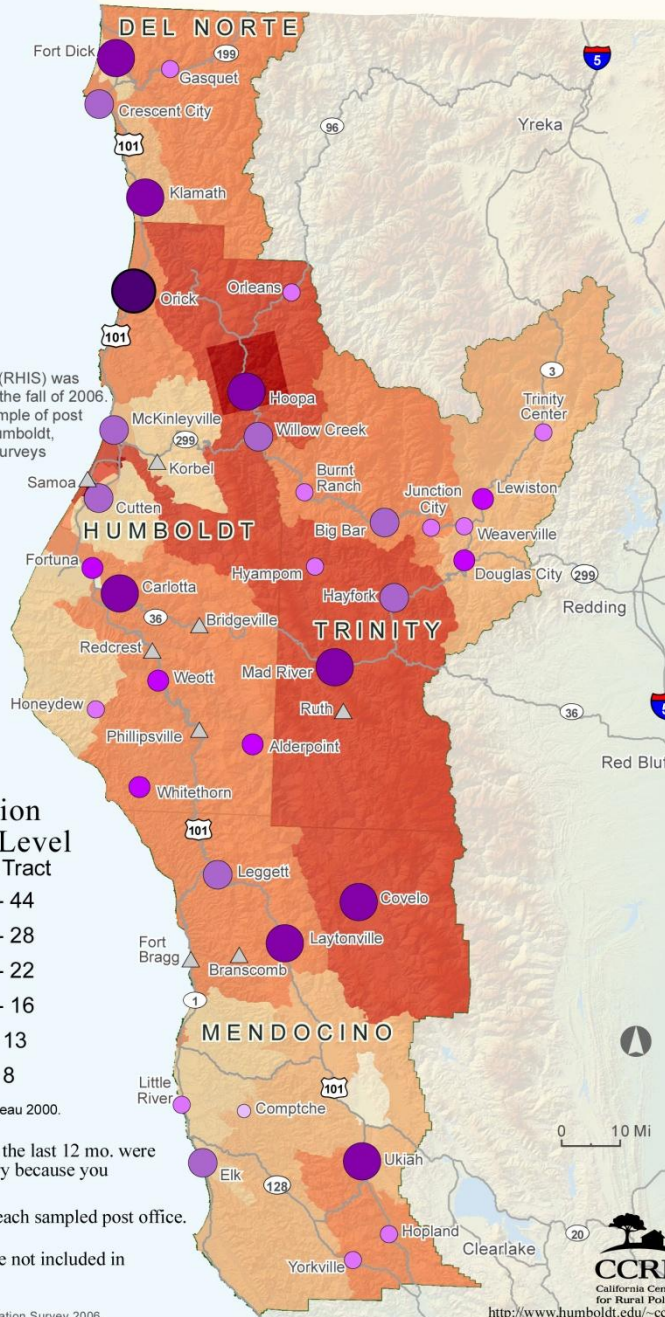
Percent of Respondents With Very Low Food Security

- ▲ Low sample size²
- 16 - 25
- 11 - 15
- 9 - 10
- 6 - 8
- 3 - 5
- 2

Total Population Below Poverty Level Percent by Census Tract



Data Source: U.S. Census Bureau 2000.

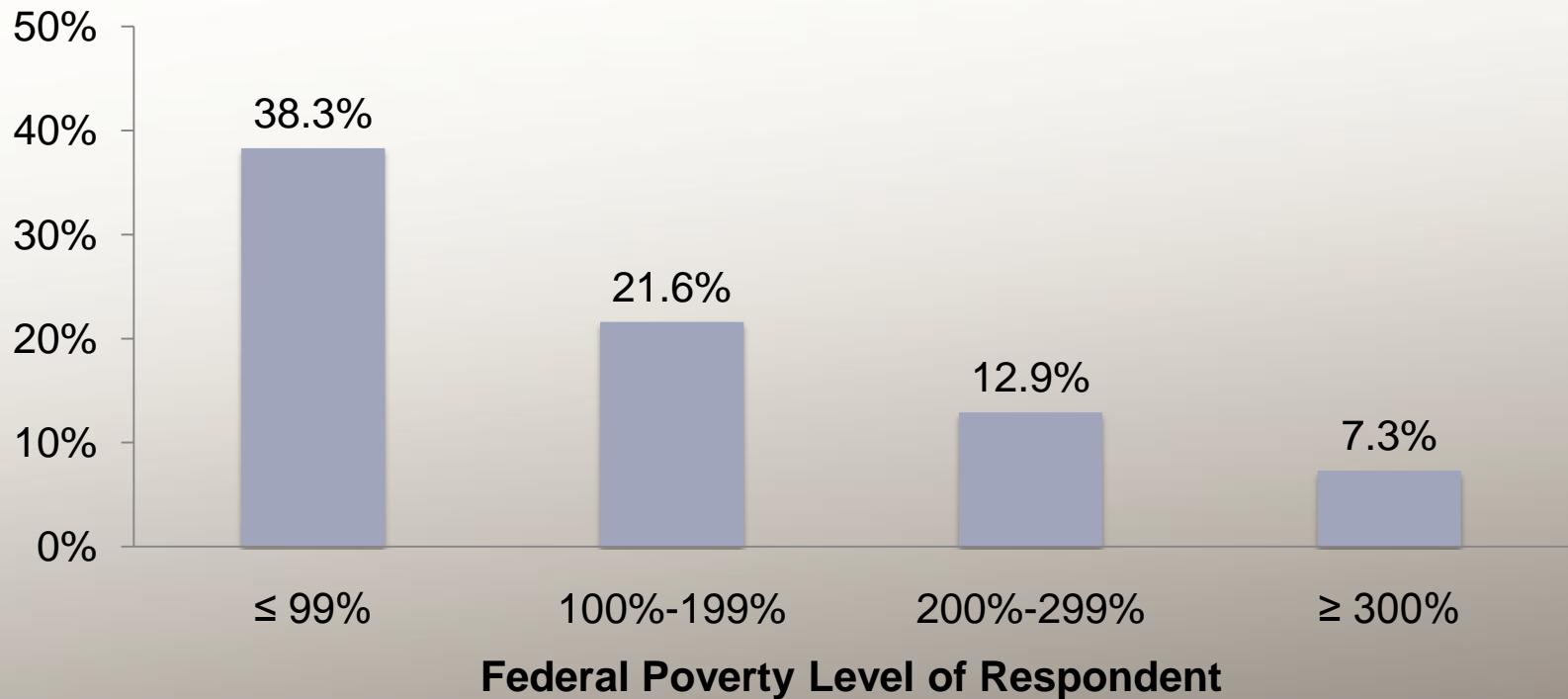


¹Data derived from RHIS survey question (31): In the last 12 mo. were you or people living in your household ever hungry because you couldn't afford enough food?

Percentages are shown for survey respondents of each sampled post office.

² Post offices with less than 20 survey responses were not included in analysis due to statistical instability.

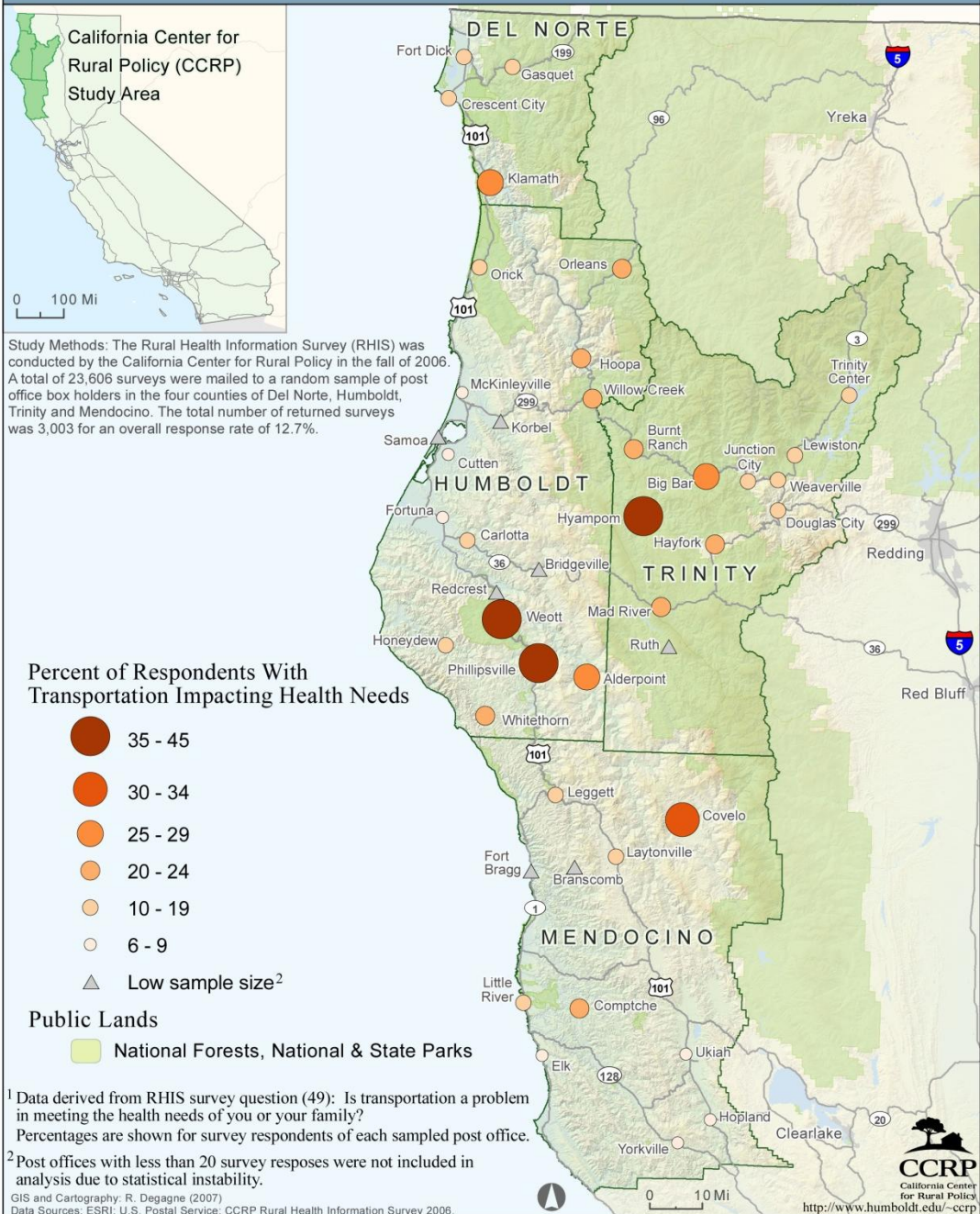
Transportation as a Problem Meeting Health Needs by Federal Poverty Level (n =2,541)



Transportation

Is transportation a problem in meeting the health needs of you or your family?

CCRP Rural Health Information Survey: Percent of Respondents With Transportation Impacting Health Needs¹, 2006



Phones, Computers & Internet Access

In your home do you have:

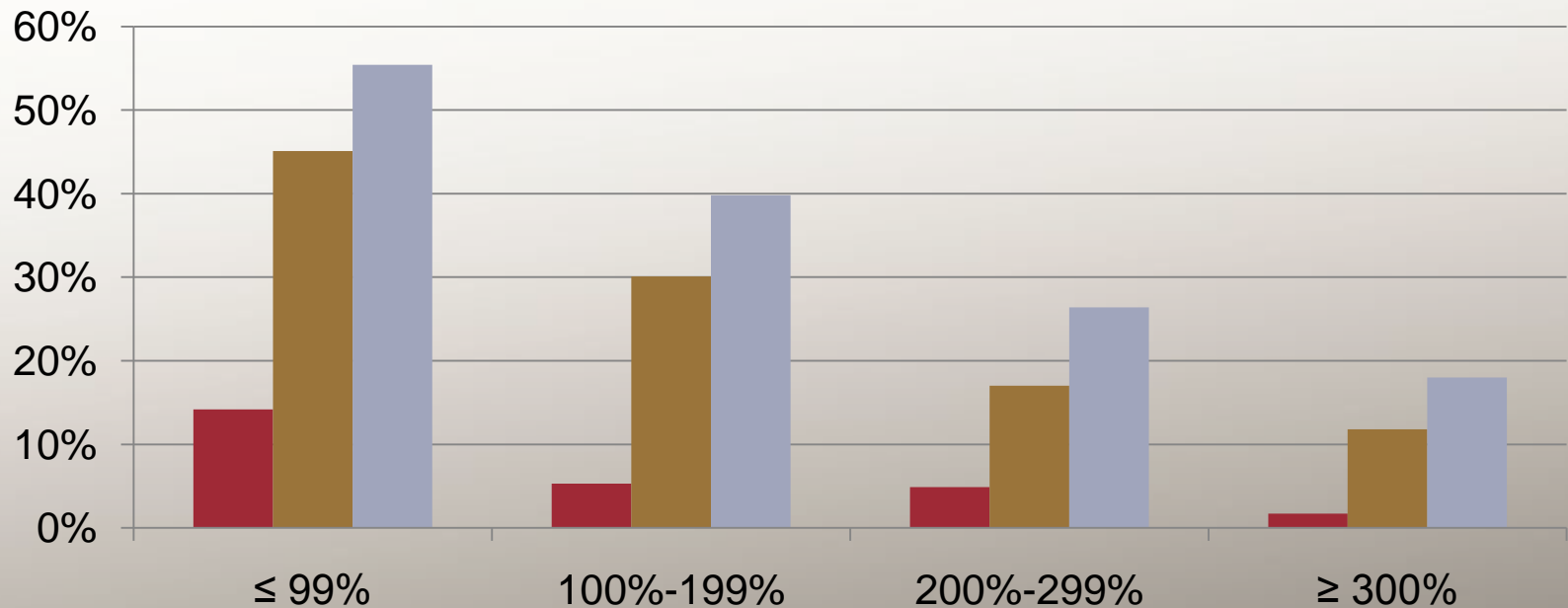
A Phone?

A Computer?

Internet Access?

No Phone, Computer, Internet Access in the Home by Federal Poverty Level

■ No Phone ■ No Computer ■ No Internet

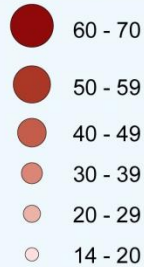


CCRP Rural Health Information Survey: Percent of Respondents Without In-Home Internet Access¹, 2006



Study Methods: The Rural Health Information Survey (RHIS) was conducted by the California Center for Rural Policy in the fall of 2006. A total of 23,606 surveys were mailed to a random sample of post office box holders in the four counties of Del Norte, Humboldt, Trinity and Mendocino. The total number of returned surveys was 3,003 for an overall response rate of 12.7%.

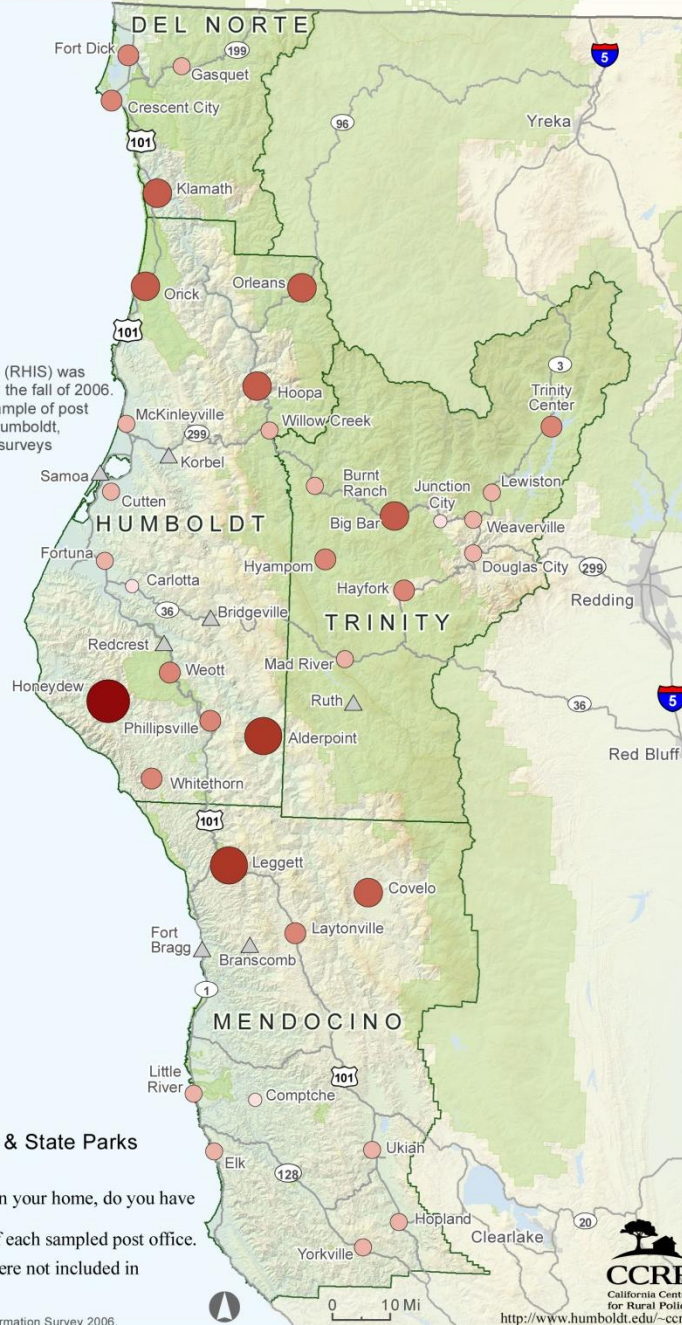
Percent of Respondents Without In-Home Internet Access, 2006



▲ Low sample size²

Public Lands

National Forests, National & State Parks



¹Data derived from RHIS survey question (37): In your home, do you have Internet access?
Percentages are shown for survey respondents of each sampled post office.

²Post offices with less than 20 survey responses were not included in analysis due to statistical instability.

Next Steps

- Continue dissemination of results
(reports, briefs, meetings)
- Policy recommendations
- Repeat survey over time to measure trends
(resource dependent)

Questions





707-826-3400
ccrp@humboldt.edu
www.humboldt.edu/~ccrp/

This research was funded by a grant from
The California Endowment